

**AGES
8-15+**



THE GAME TO LEARN ABOUT ISRAEL TODAY

A game created by



8-11

QUESTION 1

**WHY IS THE STATE
OF ISRAEL SO
IMPORTANT TO THE
JEWISH PEOPLE?**

It is the land where the history of the Jewish people has taken place for thousands of years.

According to the Torah, it is even God that gave it to the Children of Israel.

Throughout history, Jews have inhabited these places. Even when expelled, the Jewish people have always desired to return.

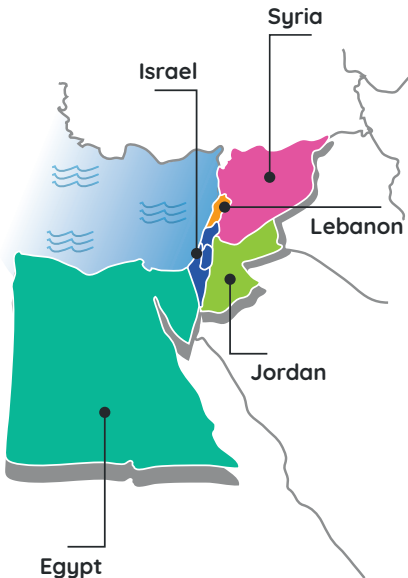


QUESTION 2

**WHERE IS ISRAEL
LOCATED?**

The State of Israel is located at the crossroads between Africa and Asia, in a region called the Middle East.

It is bordered to the West by the Mediterranean sea and has four neighboring countries: Lebanon and Syria to the north, Jordan to the east and Egypt to the south.



QUESTION 3

**WHEN WAS THE
STATE OF ISRAEL
ESTABLISHED?**

The state of Israel was
established on



Hebrew
calendar

Gregorian
calendar

BY DAVID BEN-GURION



QUESTION 4

**WHO WERE
THE FIRST
ISRAELIS?**

Before the State of Israel was established, some Jews were already living there including a few families who had already been living there for centuries.

After its creation, Jews from all over the world immigrated to this new country. This is why in Israel you can find people who are so diverse, yet who have so much in common!



QUESTION 5

**WHY WAS ISRAEL
CREATED SO LATE
DESPITE THE
LONGSTANDING
EXISTENCE OF THE
JEWISH PEOPLE?**

For nearly 2000 years,
the peoples of the world did
not accept the creation of a
Jewish state.

It was only after the
establishment of a political
movement, zionism, that this was
made possible.



QUESTION 6

WHAT IS TZAHAL?

TZAHAL
=
**TZVA HA-HAGANA
LEISRAEL**



Tzahal is a contraction of the Hebrew words "Tzva ha-Hagana LeIsrael", which designates the Israel Defense Forces. It was created at the time of the establishment of the State of Israel (1948), and aims at protecting the country and its inhabitants.

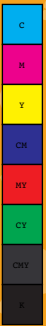
Its particular feature is that all Israelis are required to serve in the military.



QUESTION 7

**ARE THERE ONLY
JEWS LIVING IN
ISRAEL?****NO!**

There are over 7 million Jews in Israel, but there are also minorities: 1.6 million Muslim Arabs; 180,000 Christians and 140,000 Druze.



8-11

QUESTION 8

**WHAT IS THE NAME
OF THE CAPITAL OF
ISRAEL?**

The capital of Israel is called
JERUSALEM.

It is a central city in the Jewish tradition. This is where both Temples stood (Bet HaMikdash). It is also a city of significant importance for Christians and Muslims.



8-11

QUESTION 9

**WHAT IS
TEL AVIV?**

TEL AVIV

is a coastal city that was built in the early 20th century. It is the economic capital of Israel.



8-11

QUESTION 10

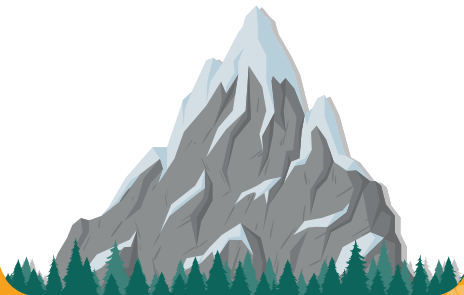
**ARE THERE ANY
MOUNTAIN RANGES
IN ISRAEL?**



YES!

Israel has mountain ranges,
mainly in Galilee and on the
Golan Heights.

The highest mountain of Israel
is called Mount Hermon and
reaches an altitude of 2,814
meters.



8-11

QUESTION 11

**DOES ISRAEL HAVE
A COASTLINE?**

YES!

The entire west coast of Israel has beaches on the Mediterranean sea. Israel also has beaches in the south, in the gulf of Eilat.



QUESTION 12

WHAT IS THE DEAD SEA AND WHAT ARE ITS DISTINCTIVE FEATURES?



The Dead Sea is a **HIGHLY SALTED** lake located in the center of Israel.



It is called the Dead Sea because no fish can live in it due to the amount of salt in its water. It is also the lowest point on the planet at -434 meters below sea level.



8-11

QUESTION 13

**WHAT IS THE NAME
OF THE GREAT
DESERT OF ISRAEL?**



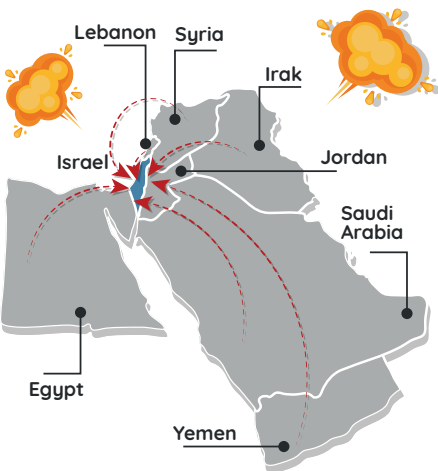
It is called the Negev desert and extends over more than half of the State of Israel. Its capital is the city of Beer Sheva.



WHY DOES THE STATE OF ISRAEL HAVE ENEMIES?

At the time of the establishment of the State of Israel, more than 75 years ago, the majority of nations around the world voted to recognize the right of the Jewish people to return to their land.

However, Arab countries opposed this and became enemies of Israel. From the very next day of its creation, they attacked the country and have since organized numerous wars against it.



WHY IS THERE A WAR BETWEEN ISRAELIS AND ARABS?

In 1947, the nations of the world voted for the creation of a state for the Jews and a state for the Arabs, living side by side. The Jews accepted it, but the Arabs **REFUSED**. They even started attacking Jews.

Until today, the refusal for Israel to exist has caused war, like the one called "Iron Swords", which has been ongoing since October 7th, 2023.



QUESTION 16

**WHO ARE
HAMAS AND
HEZBOLLAH?**

Hamas and Hezbollah are
terrorist organizations.



Terrorist comes from the word terror, which means fear. Terrorist organizations are groups aiming at scaring and hurting people, which they often do when they carry out deadly attacks. In the case of Hamas and Hezbollah, they seek to destroy Israel and the Jewish people.



WHAT HAPPENED ON SIMCHAT TORAH DAY ON OCTOBER 7TH 2023?

ON OCTOBER 7TH 2023,
on the holiday of Simchat Torah
which fell on Shabbat, Hamas
organized a huge attack on Israel.

Thousands of rockets were
launched all over Israel, while at
that moment, nearly 3,000
terrorists crossed the border
and attacked 22 different
localities. Those terrorists killed,
assaulted and abducted
hundreds of Israelis. In
response, Israel declared
the "Swords of Iron" war.

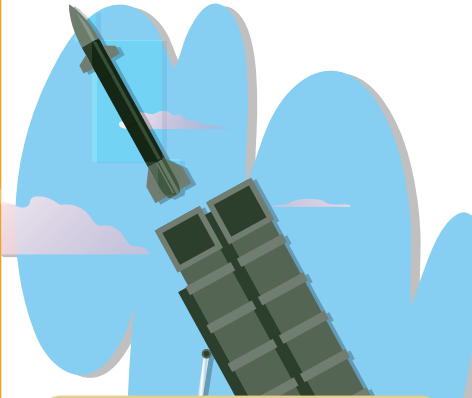


HOW DO ISRAELIS PROTECT THEMSELVES FROM THE MISSILES LAUNCHED TOWARDS ISRAEL?

Israel has a system called

"IRON DOME".

These are missiles which intercept rocket and short-range artillery shells launched towards Israel in the air.



There are also shelters (miklat) located everywhere. These are rooms in houses, buildings, or on the streets. When a missile is launched towards Israel, warning sirens go off, and Israelis know how to quickly reach shelters and wait safely until the alert ends.



8-11

QUESTION 19

**WHO ARE THE
PEOPLE KIDNAPPED
ON 7 OCTOBER?**

Hostages are

**ISRAELI MEN,
WOMEN AND CHILDREN.**

There are soldiers and civilians,
Jewish and non-Jewish people.

For example, there are Thai
agricultural workers, or
foreigners who have come to
study in Israel.



HOW CAN ISRAEL FREE THE HOSTAGES?



There are two possibilities:
either negotiating an agreement
with Hamas and exchange them
for terrorists, or recover them by
force through difficult military
missions within the Gaza strip.



**ARE FREEING
HOSTAGES AND
FREEING
TERRORISTS THE
SAME THING?**



NO!

A hostage is an innocent person who was kidnapped against their will. A terrorist in jail is a person who has committed wrongful acts, and who as a result has been punished and sentenced to jail.



8-11

QUESTION 22

**HOW CAN
TZAHAL WIN?**

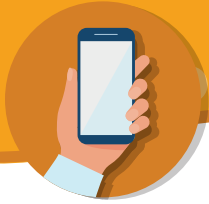


Tzahal is a strong army
that will succeed.

What we can do is pray for Hashem to protect the soldiers in their difficult mission. We can also participate in different fundraisers that enable the soldiers to have the best possible equipment to win the war.



HOW CAN WE HELP ISRAEL FROM THE DIASPORA?



You can:

- ask the people you know who live in Israel how they are doing (it warms your heart to feel that you are not alone)
- participate in numerous donation campaigns organized for the Israelis
- pray for the return to peace and normalcy.



**WHY DOES GOD
ALLOW SUCH
TERRIBLE THINGS
TO HAPPEN?**

G. has given humans

FREE WILL.

Anyone can choose whether they want to do good or evil. All choices made by humans are judged by G.



8-11

QUESTION 25

**HOW LONG IS THE
WAR GOING
TO LAST?**



Tzahal says this war is going to last for over a year.

But to be honest, we do not really know, and time will tell.



**IS THE ENTIRE
COUNTRY UNDER
BOMBARDMENT AND
HAS IT BEEN HEAVILY
DESTROYED?**

Many missiles have been launched from the North and the South of Israel.

There are many places that missiles cannot reach.

A very large number of these missiles explode en route and do not reach the ground, which minimizes destruction. Overall, Israel has not been heavily damaged by the war.



ARE ALL ISRAELIS IN THE ARMY?



NO!

On the frontline, there are young people over 18 doing their military service as well as more than 300,000 reservists mobilized since October 7th 2023.



12-15

QUESTION 1

**WHY IS THE STATE
OF ISRAEL SO
IMPORTANT TO THE
JEWISH PEOPLE?**

The State of Israel is located on
the historical land of the
Jewish people.

It is a land of refuge to all Jews
from around the world who can
come to live in a sovereign state.



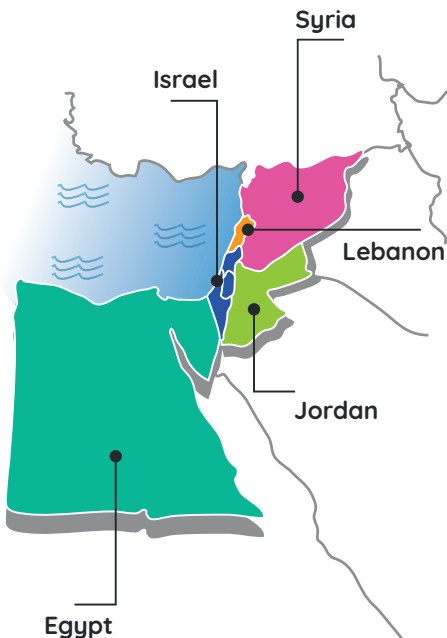
12-15

QUESTION 2

WHERE IS ISRAEL LOCATED?



In Asia, in the Middle East region, bordered by the Mediterranean sea, Lebanon, Syria, Jordan and Egypt.

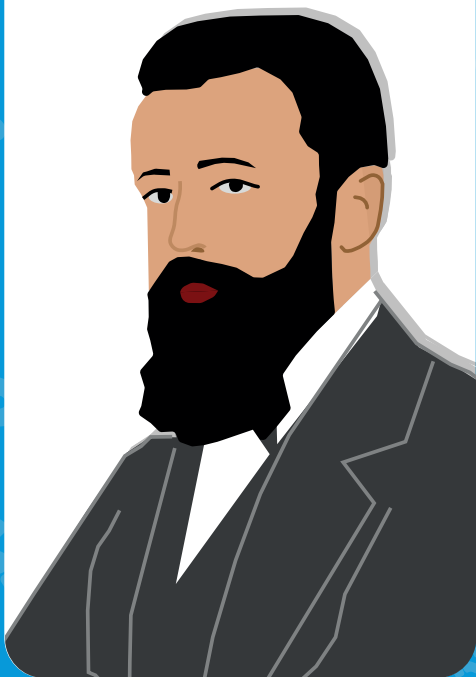


12-15

QUESTION 3

**WHO WAS
THEODOR BENJAMIN
ZEEV HERZL?
WHY IS HE SO
IMPORTANT?**

He was a Viennese Jewish writer from the 19th century, author of "the Jewish State", and co-founder of the Zionist political movement during the Basel Congress in 1897.



QUESTION 4

WHAT IS THE BALFOUR DECLARATION?



It is a declaration from **NOVEMBER 1917** transmitted by Balfour, British foreign secretary, to one of the leaders of the British Jewish community, Baron de Rothschild, declaring that the United Kingdom is in favor of **"ESTABLISHING A NATIONAL HOME IN PALESTINE FOR THE JEWISH PEOPLE"**.



QUESTION 5

WHY WAS ISRAEL PLACED UNDER THE BRITISH MANDATE BETWEEN 1920 AND 1948?

After the First World War, in 1920, the League of Nations, the predecessor of the UN, assigned the United Kingdom responsibility for administering the former Ottoman Palestine: this is the British mandate over Palestine.

This mandate lasted 28 years, until the creation of the State of Israel in 1948.



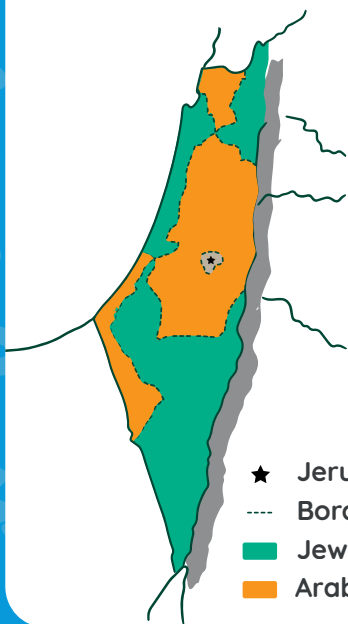
QUESTION 6

WHAT IS THE 1947 PARTITION PLAN?

UNITED NATIONS FLAG



ON NOVEMBER 29TH 1947 the UN General Assembly voted for a partition plan for the British Mandate of Palestine into three parts: one Jewish State, one Arab State, and the city of Jerusalem and its surroundings placed under international control.



- ★ Jerusalem
- Borders
- Jewish State
- Arab State

12-15

QUESTION 7

WHAT HAPPENED THE DAY AFTER THE PARTITION PLAN WAS ADOPTED BY THE UN IN 1947?

ON NOVEMBER 30TH 1947,

the first Arab attacks against the Jewish populations started in the Jewish localities of the "Yishuv".

Hundreds of attacks took place.



QUESTION 8

WHEN WAS THE STATE OF ISRAEL PROCLAIMED?

The State of Israel was
established on



Hebrew
calendar

Gregorian
calendar

BY DAVID BEN-GURION



David Ben-Gurion, one of the
great Zionist leaders of the time,
solemnly proclaimed the
independence of the State
of Israel.

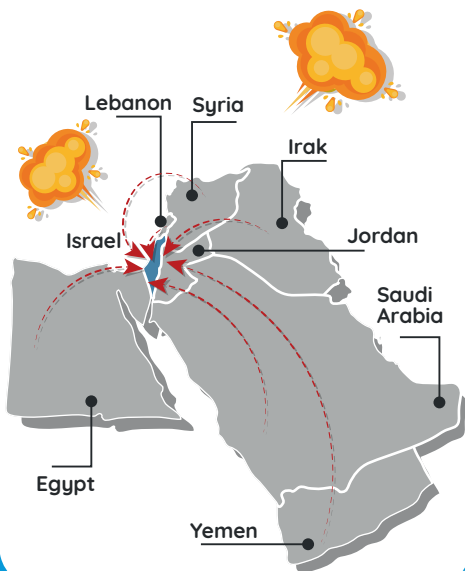


QUESTION 9

WHAT HAPPENED THE DAY AFTER THE DECLARATION OF INDEPENDENCE OF THE STATE OF ISRAEL?

ON MAY 15TH 1948, seven Arab states attacked the young State of Israel from all sides.

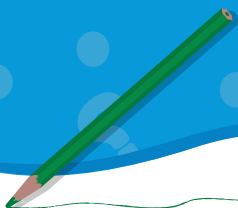
The war was very long and tough: more than a year before separate armistices were reached with each of the armies.



12-15

QUESTION 10

WHAT IS
"THE GREEN LINE"?



The green line is the **1949** armistice line between Israel and its neighboring Arab states: Syria, Lebanon, Jordan and Egypt.



12-15

QUESTION 11

**HAS ISRAEL HAD
OTHER WARS WITH
ITS NEIGHBORS?**

YES!

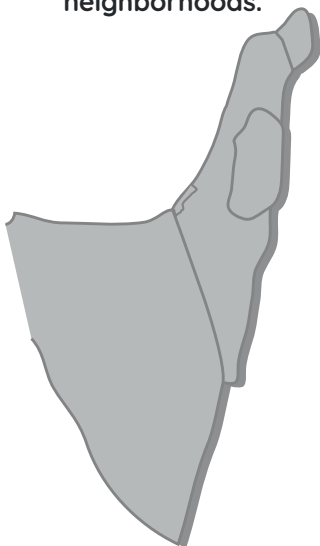
Since 1948, there have been 7 wars between Israel and its neighbors so far.



WHAT ARE THE TERRITORIES OF 1967?



Those are the territories conquered by Israel following the **SIX-DAY WAR** in **JUNE 1967**: the Sinai desert, the Gaza strip, the Golan heights, Judea and Samaria and the old city of Jerusalem, along with its eastern neighborhoods.



12-15

QUESTION 13

**HAS ISRAEL SIGNED
PEACE TREATIES
WITH ITS
NEIGHBORS?**

YES!

In 1979 with Egypt and
In 1994 with Jordan.

One can add the Abraham's
accords with the United Arab
Emirates, Bahrain, and followed
by Morocco



12-15

QUESTION 14

WHAT DOES PLO STAND FOR?

PLO means "Palestine Liberation Organization". It is a Palestinian paramilitary and political organization aiming at creating a Palestinian state.



From 1964 to 1993, the path of terrorist violence against Israelis predominated. After the Oslo accords (1993), by accepting Israel's right to exist, it became a potential partner for peace.



WHAT ARE THE OSLO ACCORDS?



THE OSLO ACCORDS are a series of agreements signed in **1993**, implementing a peace process between the State of Israel and the PLO.



Such agreements provided for the establishment of an independent Palestinian authority, which after 5 years could have evolved into a Palestinian state. The process has been at a standstill after a wave of unprecedented terrorist attacks against Israel.



12-15

QUESTION 16

WHAT IS THE GAZA STRIP?

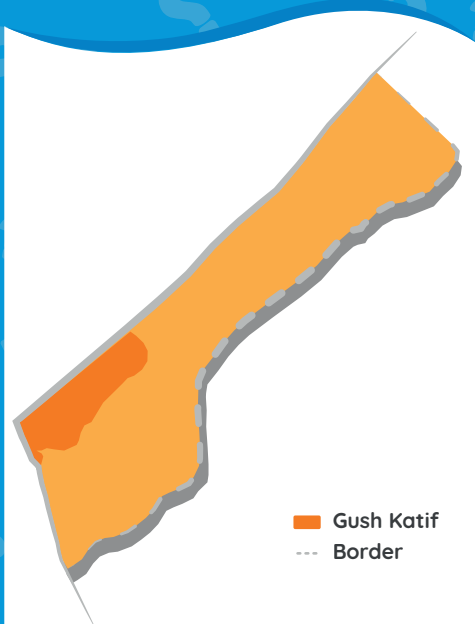
The Gaza Strip is a narrow territory which measures 41 kilometers long and 6 to 12 kilometers wide. It is located in the South West of Israel. About 2 million Palestinians live there. It is now controlled by Hamas.



12-15

QUESTION 17

**WHAT IS
GUSH KATIF?**



■ Gush Katif
--- Border



It was a bloc of Jewish settlements in the Gaza Strip created following the Israeli victory during the Six-Day war (1967). In 2005, unilaterally, the Israeli government decided to withdraw from Gush Katif.



12-15

QUESTION 18

**WHAT IS HAMAS
AND WHY DOES IT
WANT TO HARM
ISRAEL?**

It is a Palestinian Islamist
terrorist organisation
created in 1987.

It controls the Gaza strip and has
a strong influence on other
Palestinian territories.

It is supported by Iran and is
allies with the Lebanese
Hezbollah organization.



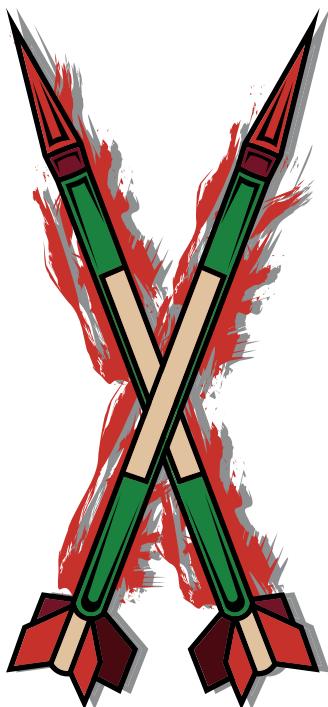
12-15

QUESTION 19

**CAN WE MAKE
PEACE WITH
HAMAS?**

NO!

Officially, Hamas seeks to destroy the State of Israel and create a Palestinian State over all of Israel, "from the Mediterranean sea to the Jordan river".



QUESTION 20

**WHAT IS
HEZBOLLAH?**

Lebanon

It is a political party and an Islamist paramilitary group in Lebanon, which also aims at destroying the state of Israel. Supported by Iran, it is an ally of Hamas.

HASSAN NASRALLAH
Secretary-General and religious leader
of Hezbollah



HOW IS IRAN RELATED TO THE ISRAELI-PALESTINIAN CONFLICT?



The current state of Iran is an enemy of Israel, seeking its destruction.

It supports different terrorist groups in the Middle East region which also seek to eliminate the Jewish State.



12-15

QUESTION 22

**IS THERE
APARTHEID
IN ISRAEL?**



NO!

Israeli Arabs and Israeli Jews
have the same rights.



WHAT HAPPENED ON SIMCHAT TORAH DAY ON OCTOBER 7TH 2023?

OCTOBER 7TH 2023

That day, during a Jewish holiday (Simchat Torah) and Shabbath, Hamas attacked Israel in an unprecedented way: launching of thousands of rockets all over Israel, unheard-of massacres and violence by 3,000 Palestinian terrorists against 22 different localities located near the Gaza border, and abduction of over 240 hostages. Israel responded immediately, by declaring the "Swords of Iron" war.



WHO ARE TZAHAL RESERVISTS?



These are Israeli citizens, men or women, who after their military service, may be called up by the Israeli army for training or to participate in a specific military operation (such as the 300,000 reservists mobilized in the "Swords of Iron" war).



12-15

QUESTION 25

WHO ARE THE HOSTAGES?

On October 7 2023, Hamas kidnapped more than 240 **MEN, AND WOMEN** of all ages, civilians or soldiers, Israeli children, agricultural workers, or foreign students, whether Jewish or not.

Some of them have already been released, while others are still held hostages in Gaza in dreadful conditions.

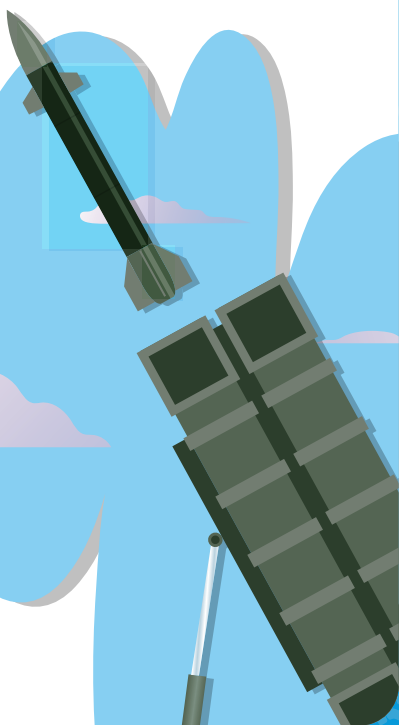


12-15

QUESTION 26

WHAT IS THE IRON DOME?

The **IRON DOME** is an Israeli mobile defense system designed to intercept rockets and short-range artillery shells launched towards Israel from the surrounding territories (Gaza, South Lebanon, Syria etc.)



**AGES
8-15+**

**AGES
12-15**

**AGES
8-11**

UnitEd



מְשׁוֹר הַתְּמוּצוֹת
וְהַמְּאִבֵּק בְּאוֹנִישִׁימִיּוֹת

Editing
Eliana Gurfinkiel

Graphic Design
Bella Wdowinski

